

DPU

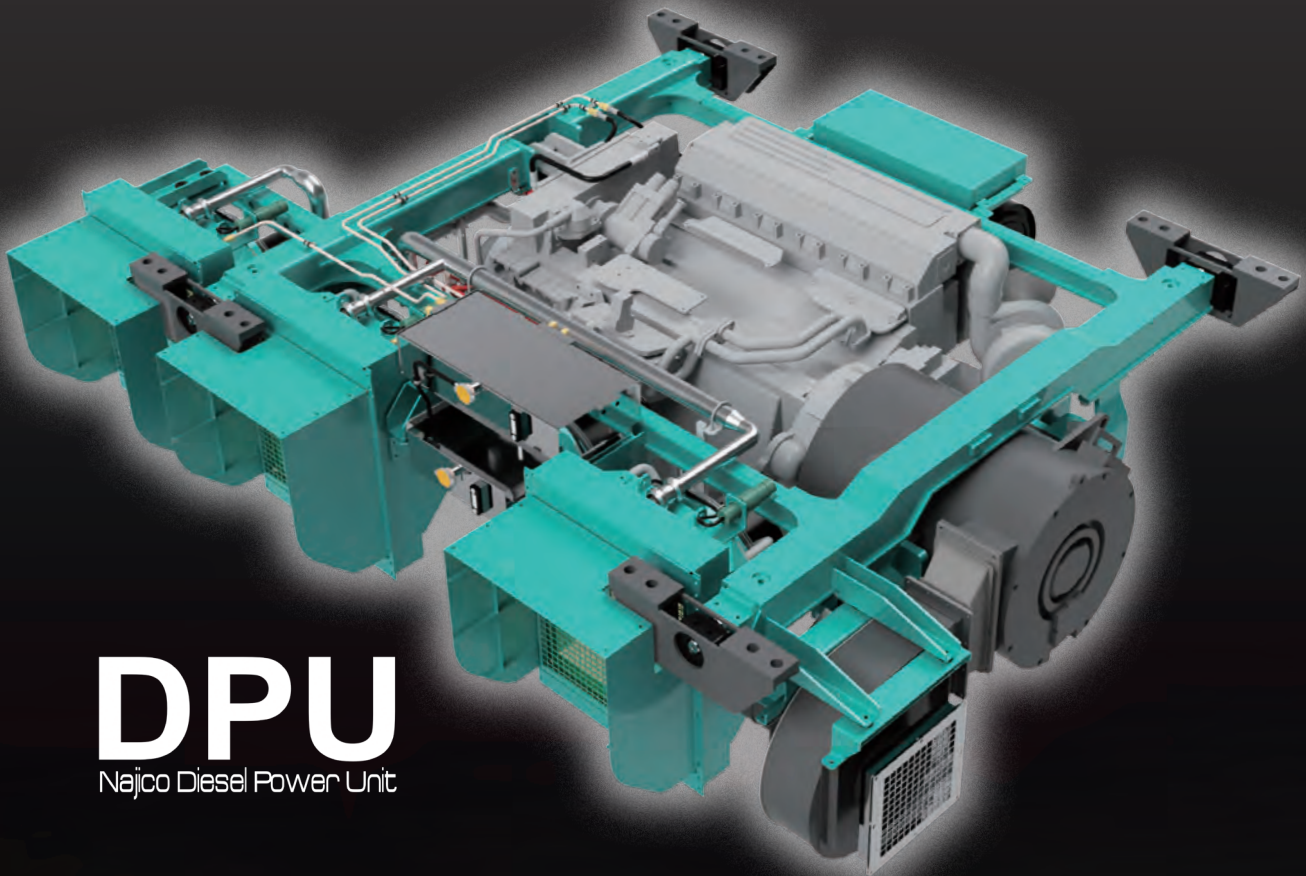
Najico Diesel Power Unit



NAJICO Co.,Ltd.

Design, Sales of Rolling Stock Parts
Design, Sales, Customer Service of

Universal Joint / Safety Fit / Heat Exchanger / Large Heat Exchanger



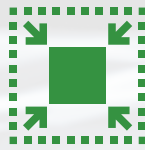
DPU

Najco Diesel Power Unit



All in One

- Standardized Design
- Less man-hours in Car design
- Prehension of performance as a unit



More Compact More Space

- Optimized layout
- Save more space for underfloor rigging
- Less weight
- Save time in update of equipments



Easy Maintenance

- Less Parts
- Clogging preventing radiator core
- Monitoring of each equipment

List	Unit	Specification
Name	-	Diesel Power Unit (DPU)
Application	-	Power Generating Device for Rolling Stock
Engine	Model	SA6D140HE-3
	Output	kW 331
	Rotation speed	min ⁻¹ 2000
	Displacement	L 15.24
	Fuel Injection Type	- Common Rail Injection
	Emission Reduction	- Equivalent to UIC2
Main Generator	Model	- DM601K
	Type	- Three Phase Squirrel-cage Induction Generator
	Output	kW 270 (at 1670min ⁻¹)
Cooling System	Core model	- SW5-6 Square Wavy Fin
	Core Size / quantity	mm 550 ^W ×580 ^H ×107 ^D ×3core
	Core Material Tube / Fin	- Copper / Copper
	Fan Size	mm φ515
	Fan Motor	- 3φ/AC440V, Flat type induction synchronous motor, 3.7kW×3
Other Equipments	-	Air Cleaner, Water Tank, Reserve Tank, Fuel Pre-filter, Cooling Blower for Main Generator
Unit Size	mm	3189 ^W ×2440 ^H ×838 ^D , (Without Anti-wind Entrainment Plate)
Unit Mass	Dry Mass (Plan)	kg 3788 (Unit Frame: 336kg)
	Wet Mass (Plan)	kg 3958 (Without Anti-wind Entrainment Plate)
Attached Equipments (Accessories)	-	Engine Control Panel, Fan Controller (Inverter Type) , Anti-wind Entrainment Plate (Option)

NEXT NAJICO

Carbon Neutral, a Carbon-Free Society
Japan is aiming to get there by 2050

In order to swim with the tide, time has come for the Railway Industry to seek to change

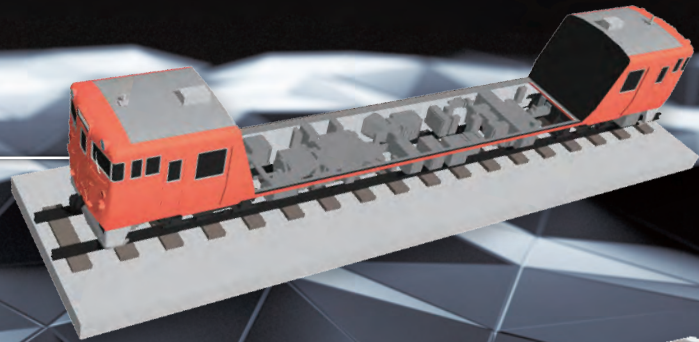
By adopting our DPU, main components,
traditionally fitted separately in diesel multiple unit,
will be put together into a unit, saving more space
around the underfloor area

Having this opportunity, we can smoothly transit to a future power

NAJICO has now started our journey toward Carbon Neutral

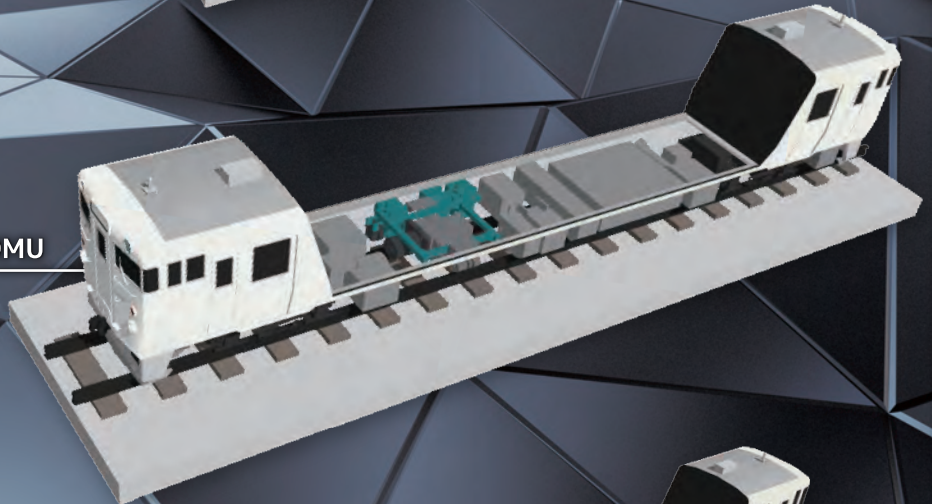
around
1980

Traditional DMU



2024

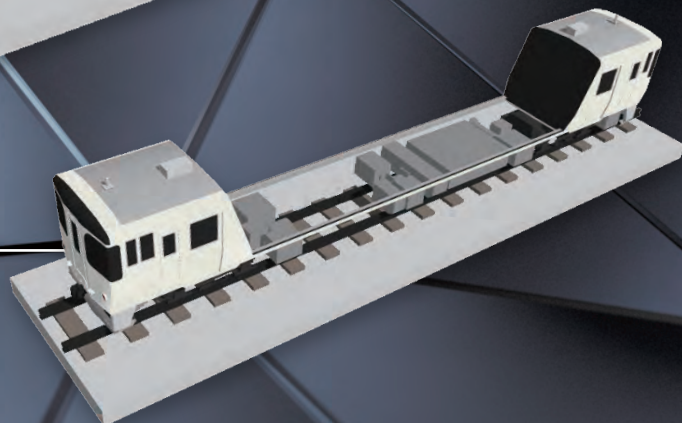
DPU installed DMU



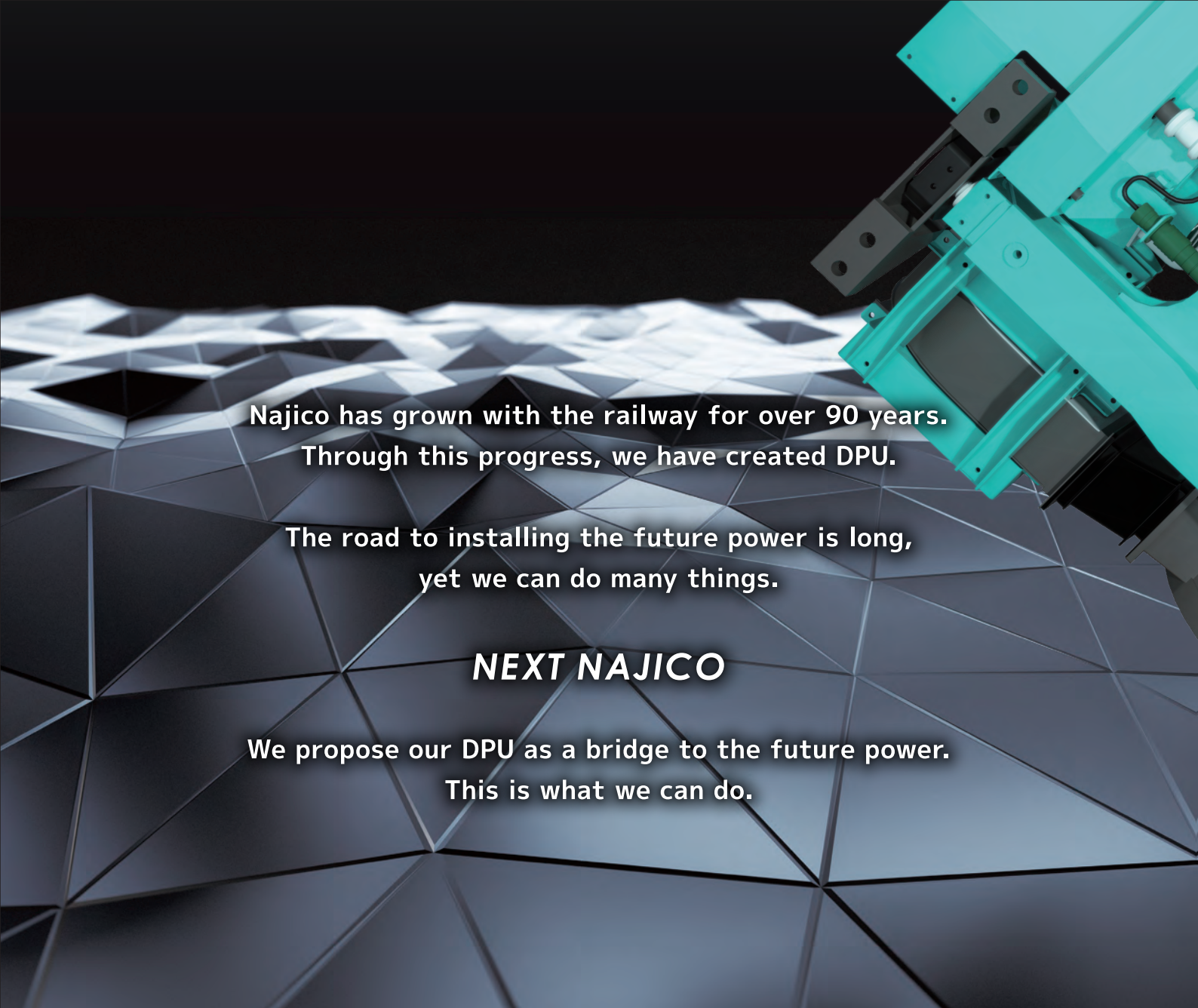
2050

Blue print of the future
outfitting space

We expect the future power to fit
into the space provided



ALL IN ONE × MORE COMPACT, MORE SPACE × EASY MAINTENANCE



Najico has grown with the railway for over 90 years.
Through this progress, we have created DPU.

The road to installing the future power is long,
yet we can do many things.

NEXT NAJICO

We propose our DPU as a bridge to the future power.
This is what we can do.



NAJICO Co.,Ltd.

Rolling Stock Parts Division

3-10-10, Tsukiji, Chuo-ku, Tokyo, 104-8431, Japan

TEL:+81-3-3543-9705 FAX:+81-3-3543-9729

<https://www.najico.co.jp/en>