

A detailed technical line drawing of industrial machinery, likely a rolling mill, serves as the background. It features various components such as large rollers, structural frames, and mechanical linkages, all rendered in a precise, schematic style.

NAJICO

Rolling Stock Parts and Relative Goods.

The background is a grayscale photograph of a railway track receding into the distance. A large blue semi-circle is in the top-left corner, and a smaller blue square is in the top-right corner. A large blue rectangle is positioned in the lower half of the page, containing white text.

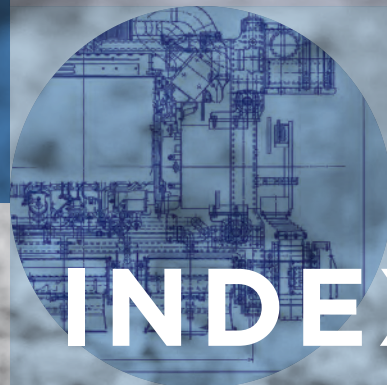
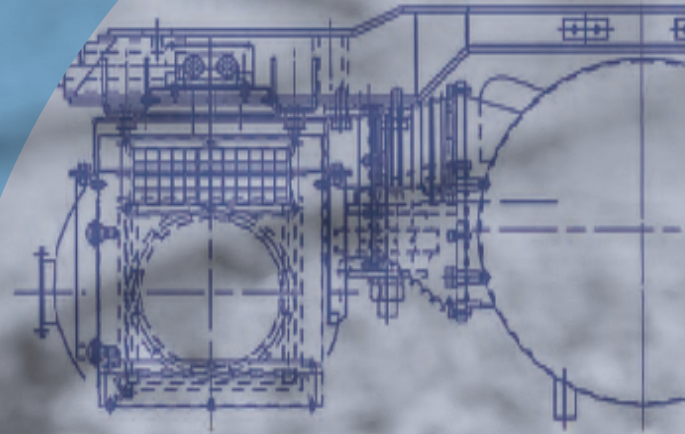
Group management vision

**Building trusted quality / Growing with customers /
Offering new value to society**

People's lives keep changing and diversity continues to expand.

Without being bound by preconceptions, Najico will develop new technologies and ideas with an eye on the future. To this end, we must consider resource and energy issues and pay attention to environmental conservation. Based on these efforts, we will provide all kinds of solutions, creating new value to contribute to a mobility society.

NAJICO



INDEX

01 Bogie Parts

02 Diesel Rolling Stock Parts

03 Passenger Compartment and Driver's Cab-related Parts

04 Body and Fitting Parts

05 Machines and Equipment

06 Products Using Special Technology

07 Najico's Initiatives

08 Company Profile & Branch Offices

01

Bogie Parts

Najico contributes to precise and powerful running of trains every day in both visible and invisible spaces.



Wearing Plates/Bush



Wearing Plates



OILES Bearings

Items Procured Overseas



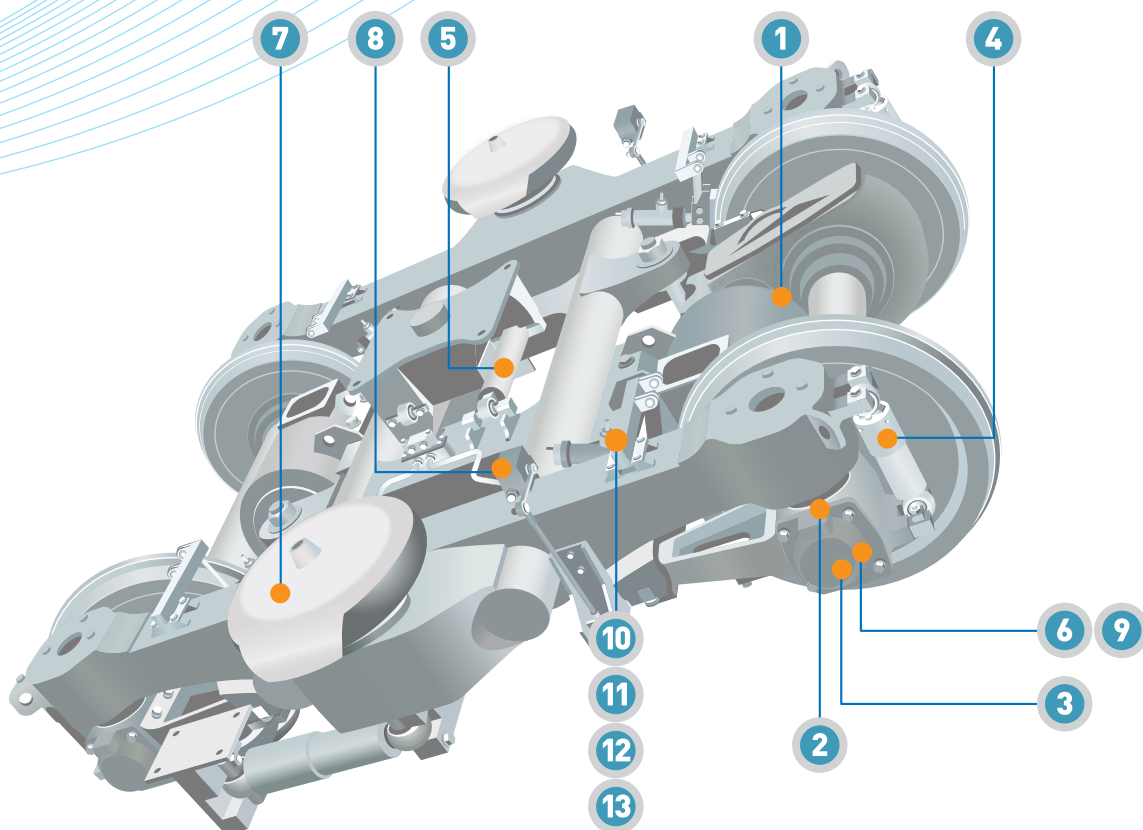
1 Motor Suspension Unit



2 Journal Bearing



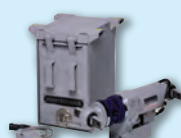
3 Earthing Unit



Suspension-related Parts



4 Oil Damper/ Shock Absorber



5 Semi-active Suspension System



6 Axle Suspension Rubber



7 Air Spring



8 Automatic Leveling Valve



9 Rubber Bush

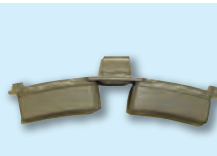
Brake-related Parts



10 Caliper Brake



11 Sintered Metal Brake Pad, Brake Lining



12 Brake Shoe, Brake Block



13 Wheel Tread Cleaning System

Najico's experience and technology, enthusiasm and dispassionate consideration support our future.



Power System/Auxiliary Equipment



1 Diesel Engine for Diesel Multiple Unit



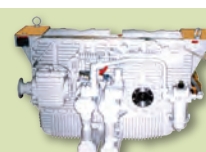
2 Diesel Engine for Diesel Locomotive



2 Hydraulic Transmission for Diesel Multiple Unit



2 Hydraulic Transmission for Diesel Locomotive



3 Constant Speed Unit for generator drive



4 Drive Shaft, Auxiliary Driving Shaft



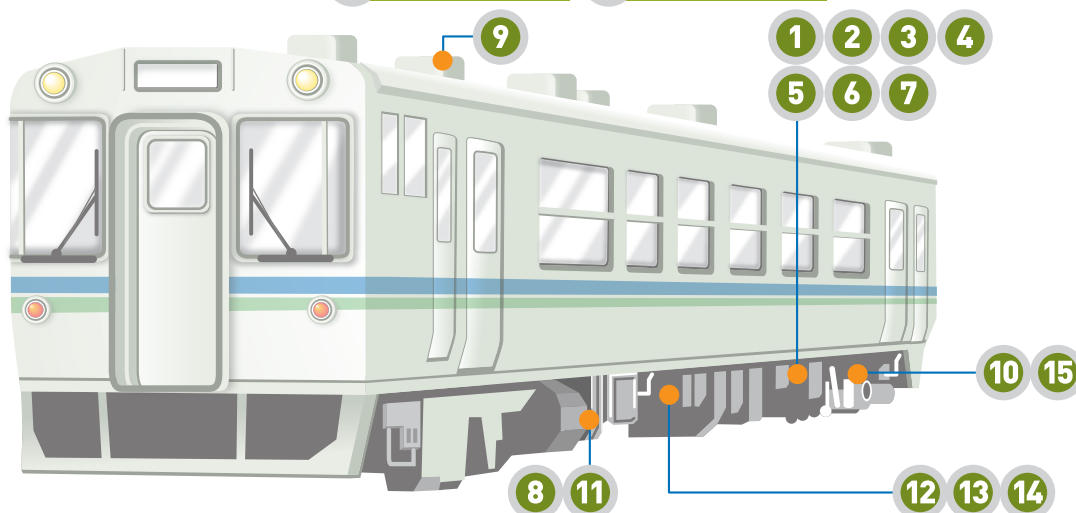
5 Auxiliary Driving Parts



6 Reduction Gear



7 Starting Motor



Cooling Equipment



8 Heat Exchanger, Radiator, Oil Cooler



9 On Roof Radiator

Electronic Equipment



10 Fuel Leak Detectors



11 Fan Control Unit for cooling system

Other Equipment



12 Fuel Tank



13 Water Tank



14 Exhaust Silencer



15 Pre heating system

03

Passenger Compartment and Driver's Cab-related Parts

Najico has paid the closest attention to every detail of facilities' comfort and safety.



Driver Cab Equipment



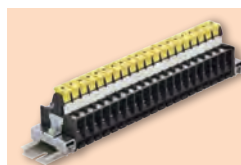
1 Tumbler Switch



2 Operation Room Switches



3 No Fuse Breakers



4 DC Disconnect Terminal Blocks



5 Pressure Gauges

Broadcast Unit



6 In-Car Broadcast Communication Systems/ Emergency Report Systems



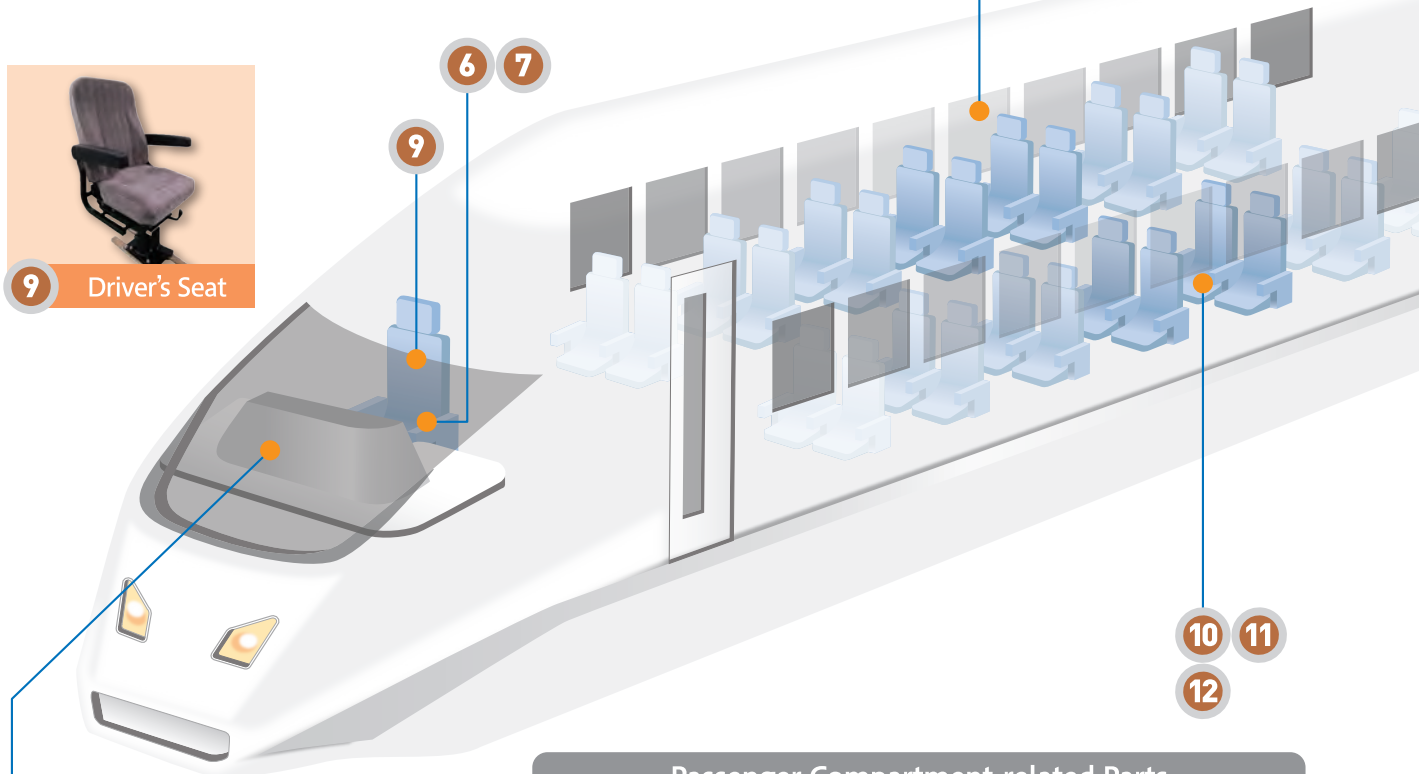
7 Electronic Alarm System



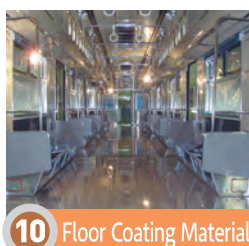
8 Fluorescent Lamp Inverters



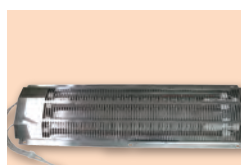
9 Driver's Seat



Passenger Compartment-related Parts



10 Floor Coating Material



11 Electric Heaters



12 Passenger's Seat

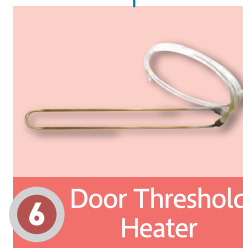
04

Body and Fitting Parts

Rolling stock technology proposed by Najico supports comfortable spaces in trains traveling at high speeds.



On Roof Fitting Parts



Underfloor Fitting Parts



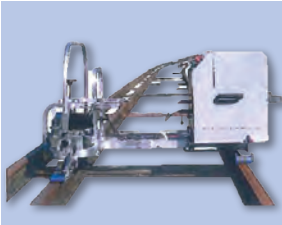
05

Machines and Equipment

Najico provides rolling stock-related products and testing equipment to support customers in various ways.



Track Maintenance-related Equipment



1 Rail Grinders



2 Synthetic Sleepers

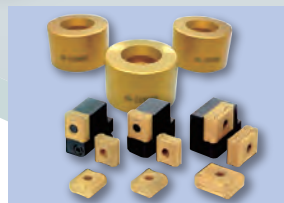
Inspection and Repair Facility/Equipment



3 Lifters



4 Damper Test System



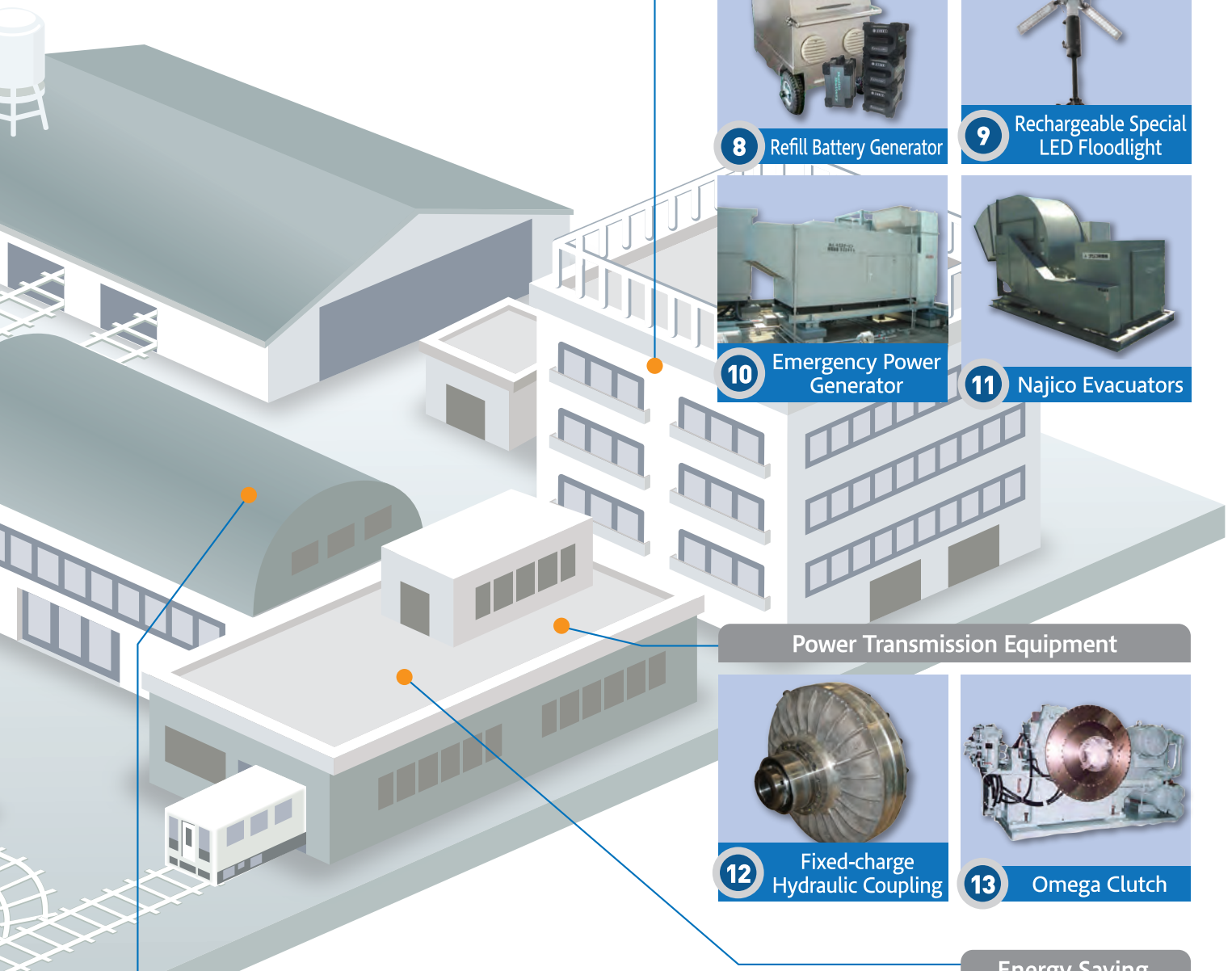
5 Turning Tools for Wheel Turning Applications



6 Pit Lifts



7 High-Place Work Platforms



Disaster Prevention Facility/Equipment



8 Refill Battery Generator



9 Rechargeable Special LED Floodlight



10 Emergency Power Generator

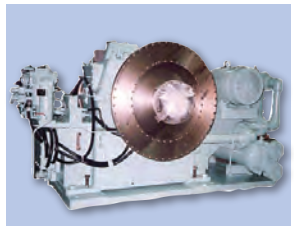


11 Najico Evacuators

Power Transmission Equipment



12 Fixed-charge Hydraulic Coupling



13 Omega Clutch

Tools



15 Videoscopes



16 Thread Rolling Machine for Pipes



17 Band Saws

Energy Saving Equipment



14 Silvent Air Nozzles

06

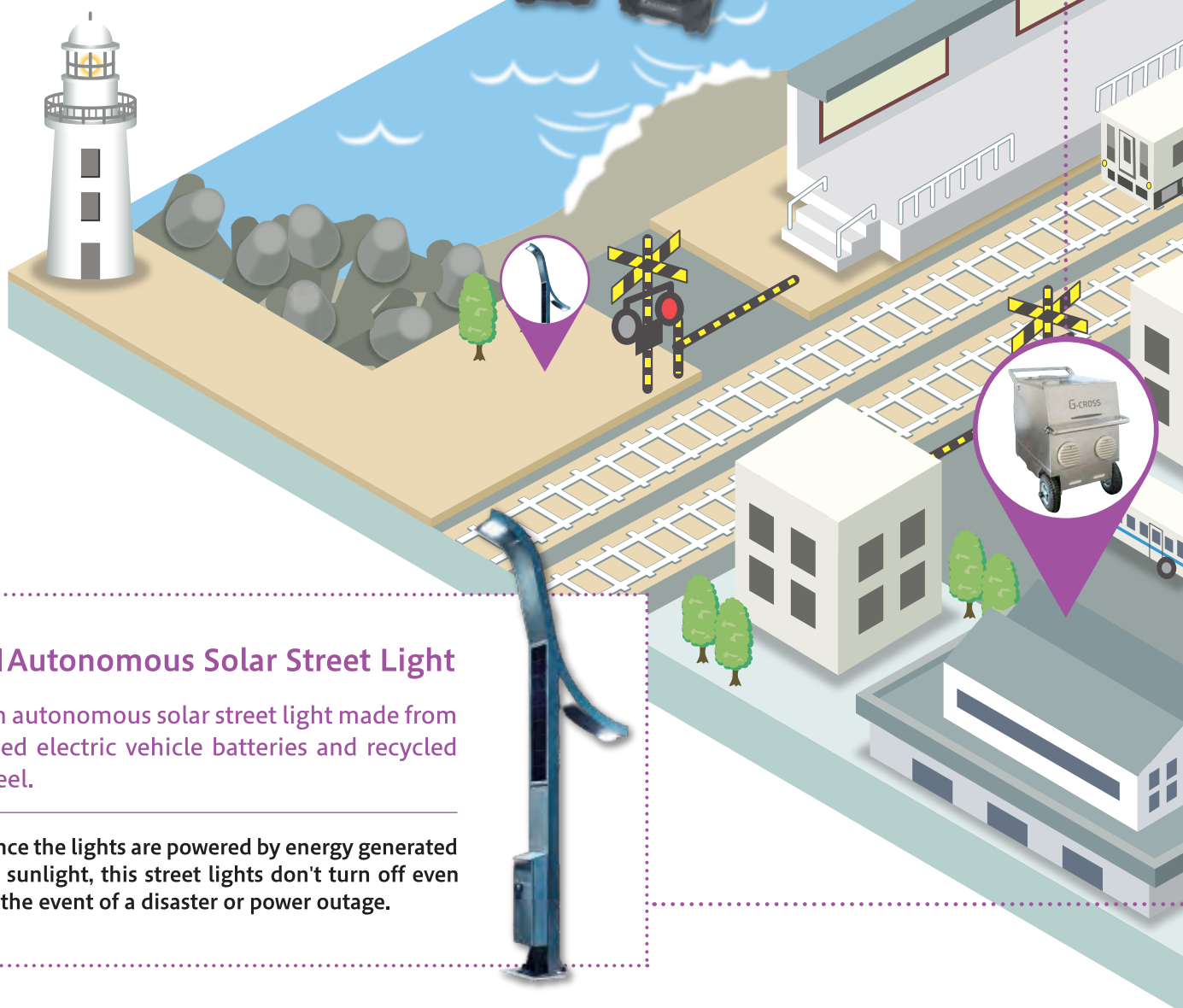
Products Using Special Technology



■ Refill Battery Generator

A power supply that can supply power continuously.

By adopting a refillable battery that can be replaced with a drip-proof device, you can use indoors and outdoors, even in the event of rain or disasters.



■ Autonomous Solar Street Light

An autonomous solar street light made from used electric vehicle batteries and recycled steel.

Since the lights are powered by energy generated by sunlight, this street lights don't turn off even in the event of a disaster or power outage.

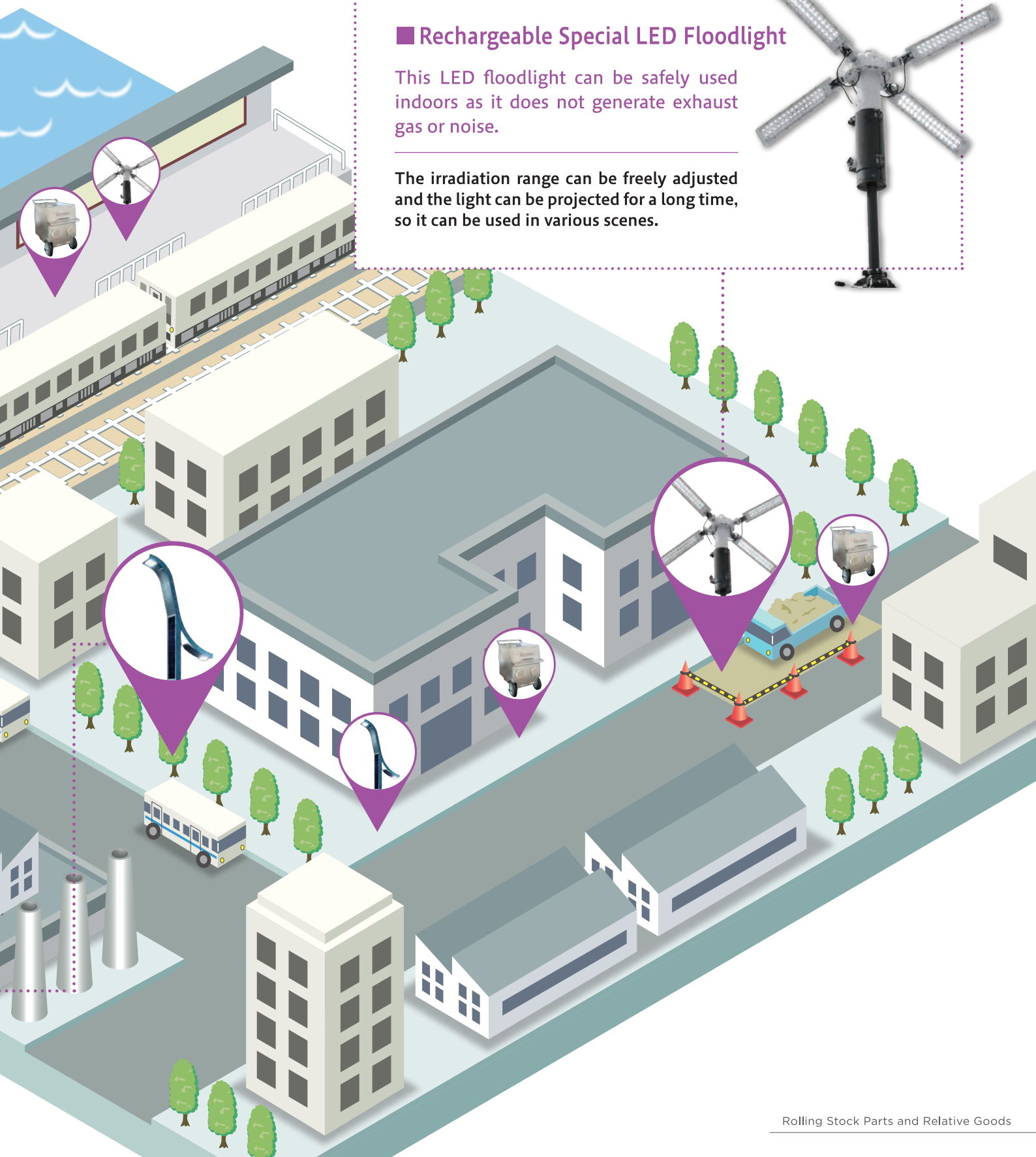


We handle products that utilize cutting-edge technology and patented technology that Japanese manufacturers pursued and produced.
We will continue to propose products that are useful to everyone involved.

■ Rechargeable Special LED Floodlight

This LED floodlight can be safely used indoors as it does not generate exhaust gas or noise.

The irradiation range can be freely adjusted and the light can be projected for a long time, so it can be used in various scenes.



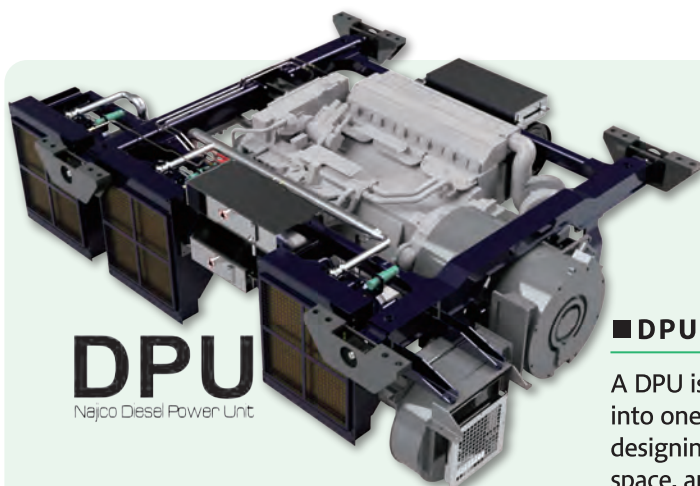
07

Najico's Initiatives



Engineering Solution

Based on our accumulated technical know-how, we can design products that meet the various needs of our customers. We not only deliver ready-made products, but also give shape to our customers' needs.



DPU
Najico Diesel Power Unit



All in One



More Compact
More Space

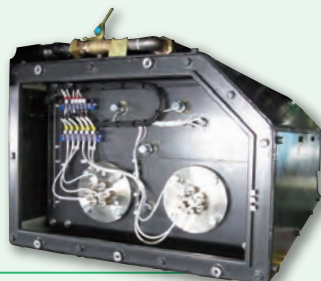


Easy
Maintenance

■ DPU

A DPU is a power system that integrates individual components into one frame unit. The unitization helps reduce man-hours in designing rolling stock, enables more efficient use of underfloor space, and saves labor in maintenance.

■ Electric Water Heater



This is a large electric water heater that supplies hot water to passenger compartment facilities. We design such a water heater through the engineer-to-order (ETO) approach.

■ Electric Fan Controller



Controller to optimize the rotation speed of electric fan by inverter control, in conjunction with the engine coolant temperature.

■ Parts Design & Manufacturing

Regardless of whether it is a part for new rolling stock or a spare part, we can manufacture any type of part even if the original manufacturer stopped its production or it is a special railway part that is difficult for other companies to manufacture.

We provide integrated service, from drawing and product manufacturing using our own supply chain, including our own factories, to quality control.



Najico Moriya Satellite Station

We have a logistics station in Ibaraki Prefecture. We stock a wide variety of parts in a station and deliver items in a timely manner according to the customers' rolling stock maintenance plan. Of course, we handle a wide range of items that our customers need.



Global expansion



NAJICO has been focusing on exporting rolling stock parts for a long time and has supplied various parts to railway operators and car builders based in East to Southeast Asian regions. In recent years, our overseas transactions have expanded dealing with products that are not limited to rolling stock parts, but also track parts including synthetic sleepers and facility equipments.

South Korea



We supply hydraulic transmissions to car builders that mainly produce maintenance locomotives. We have been patronizing high-quality Japanese products for many years.

Taiwan



Najico brand cooling systems and drive shafts have been adopted in many diesel trains and locomotives that are active in Taiwan.



Myanmar



In 2019, we delivered approx. 7,000 synthetic sleepers to Myanmar Railways. After delivery, we provide on-site guidance on processing and laying together with the manufacturer, contributing to the improvement of bridge safety.



From 2010, we started supplying parts for used diesel railcar transferred from Japan. Today, we supply not only engine and transmission parts, but all kinds of rolling stock parts.

China

Chinese rolling stock manufacturers are developing various rolling stock products equipped with cutting-edge technology. We are contributing to the development of rolling stock by improving the ride comfort of next-generation high-speed rolling stock and proposing various systems.

Brazil



We supply transmissions parts for in-house locomotives of steelworks. Railways are active even in places that many people do not see, and we also support such railways.



Please feel free to contact us for any inquiries concerning import or export of products: interest of Japanese railway market, interest of overseas products, need of import/export support, etc.





Company Profile

●Head office

3-10-10, Tsukiji, Chuo-ku, Tokyo
104-8431 Japan

●Founded: July 18, 1929

●Incorporated: July 14, 1947

●President: Hiroki Nakamura

●Paid-in Capital: 315 million yen

●Main Business Lineup

【Industrial Machinery Division】

Design and Sales of Universal Joint
and Heat Exchanger

【Mobility Solution Division】

Design and Sales of Rolling Stock Parts
Sales of Machines and Equipments



Contact

●Overseas Sales Section, Mobility Solution Division

3-10-10, Tsukiji, Chuo-ku, Tokyo 104-8431 Japan

TEL +81-3-3543-9705

FAX +81-3-3543-9729



Branch Office

- Sapporo Sales Branch
- Sendai Sales Branch
- Niigata Sales Branch
- Tokyo Sales Branch
- Nagoya Sales Branch
- Osaka Sales Branch

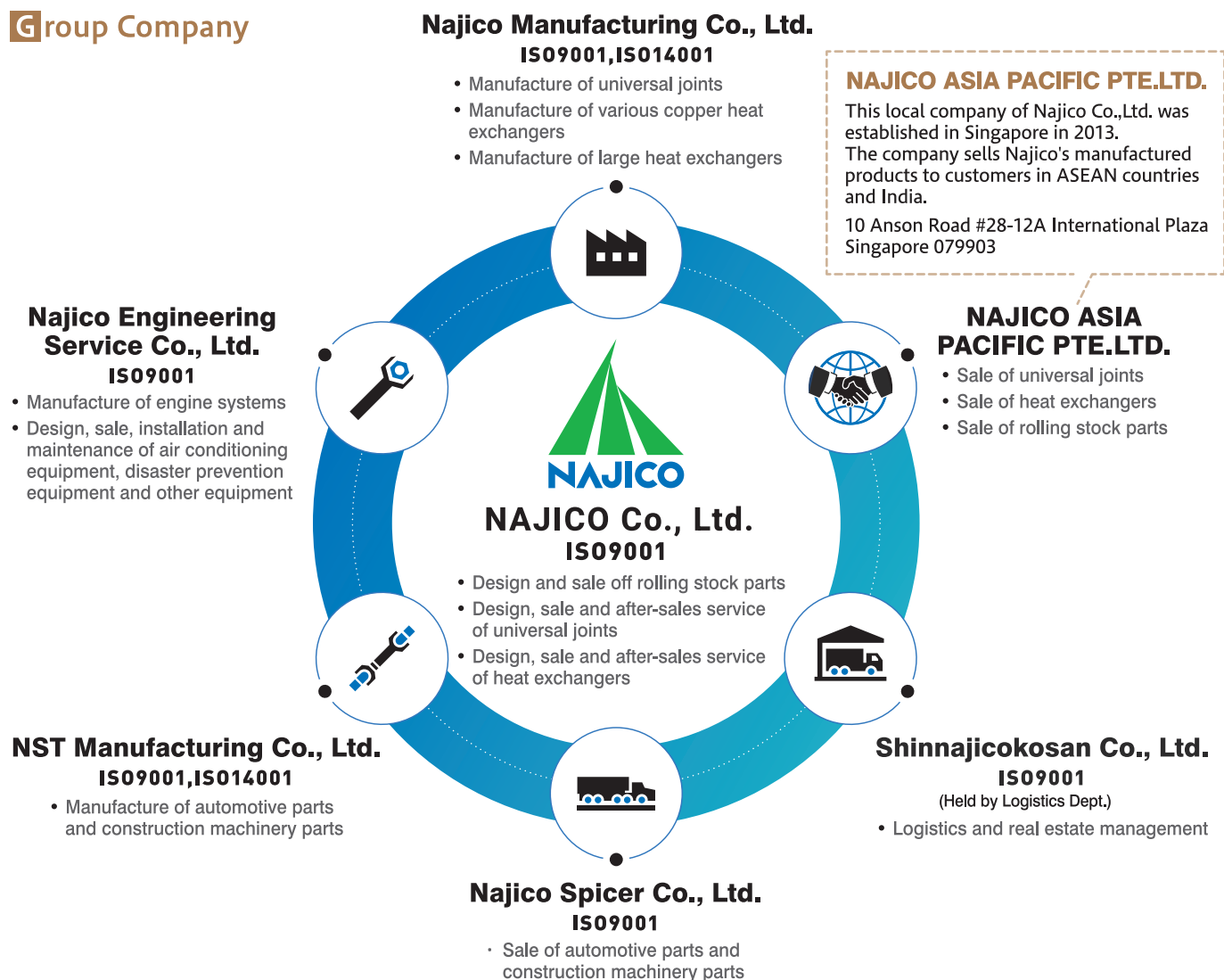
- Yonago Sales Branch
- Okayama Sales Branch
- Hiroshima Sales Branch
- Shikoku Sales Branch
- Fukuoka Sales Branch

●Beijing Representative Office

2910B, Jingguang zhongxin, Hujialou,
Chaoyang district, Beijing, China
Tel. +86-10-6597-3700
Fax. +86-10-6597-3873

Najico's sales network is widely spread and bring us the next generation.

Group Company



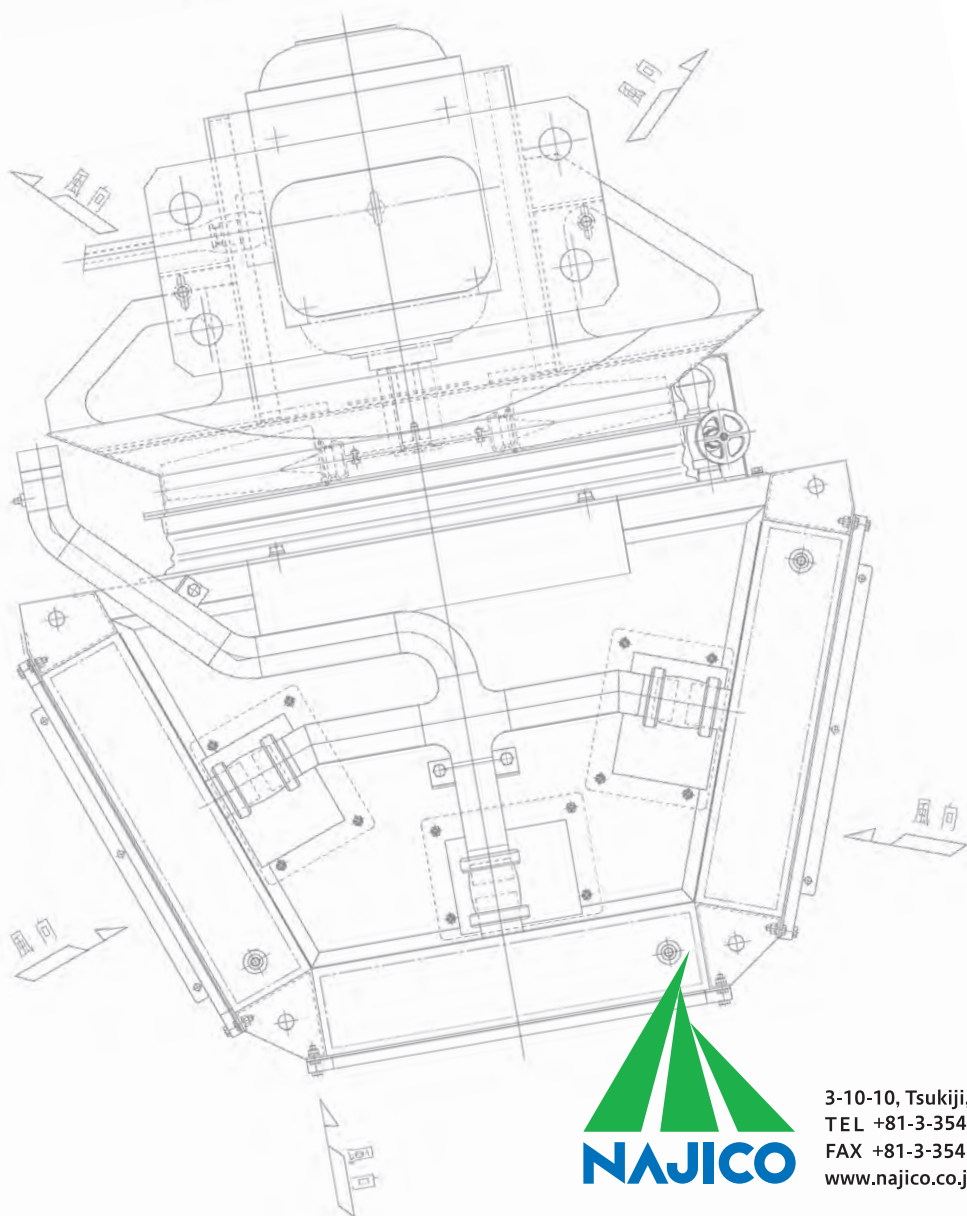
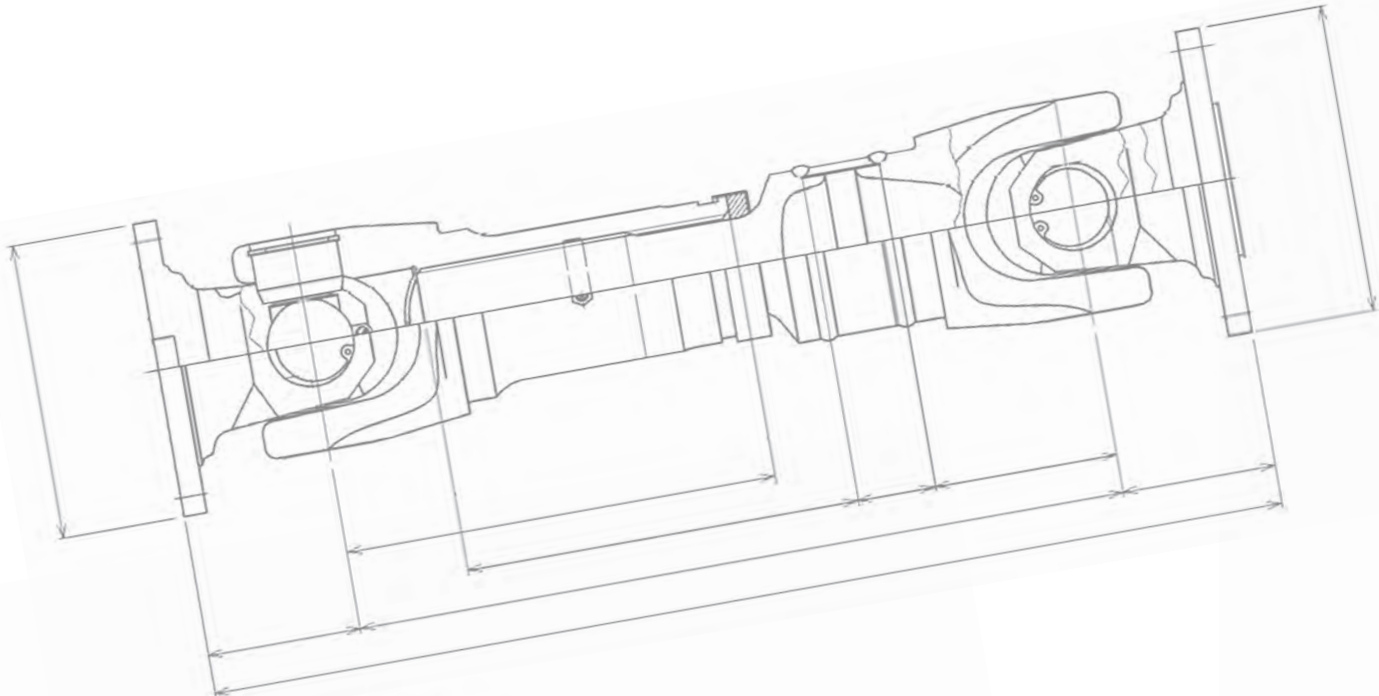
Suppliers and photo providers

ACT Electronics Corp.
AGC fabritech Co., Ltd
AICHI CORPORATION
Akebono Brake Industry Co., Ltd.
AKIMOKU STEEL CASTING CO., LTD.
Alphadenshi Co., Ltd
Annaka special glass Mfg. Co., Ltd.
BABA CO., LTD.
DAIHATSU DIESEL MFG.CO.,LTD
DAIHATSU DIESEL EAST JAPAN CORPORATION.
DAIJIKU Co., Ltd.
Daikou Denki CO., LTD.
DOPPEL CO. LTD.
Eberspächer Climate Control Systems GmbH & Co. KG
EIKO ELECTRIC INDUSTRIAL CO.,LTD.
ErlingKlinger Marusan Corporation
F-D-S Co.,Ltd
FUTEC ORIGIN CORP.
GERKEN S.A.
Global Electronics Corporation
GOKO SEISAKUSHO CO., LTD.
GOKOH SHOJI CO., LTD.
HAYAKAWA ELECTRIC MFG.CO.,LTD
Hitachi Astemo, Ltd.
Hitachi Astemo & Nagano, Ltd.

Hitachi Nico Transmission Co., Ltd.
Horiguchi Engineering Co., Ltd.
IHI Power Systems Co.,Ltd.
INAGAKI INDUSTRY CO., LTD.
JABARA CO., LTD.
Japan Coating Resin co.,Ltd.
JOHNNAN Corporation
JR East Rail Car Technology & Maintenance Co.,LTD
KANENO Co., Ltd.
KANTO NOK HANBAI Co.,Ltd.
KITZ Corporation
Kawasaki Railcar Manufacturing Co.,Ltd.
Kawasaki Thermal Engineering Co.,Ltd.
KEEPER CO., LTD.
Keio Juuki Seibi Co.,Ltd.
Kingrun Co., Ltd.
KITZ Corporation
KOITO ELECTRIC INDUSTRIES, LTD.
Koshin Seikosho, Ltd.
KUBOTA Manufacturing Co., Ltd.
KUROKI INDUSTRIES CO., LTD.
KYB Corporation
MAHLE Japan Ltd.
MIRAI-LABO CO.,Ltd.
Nabtesco Corporation.
Nabtesco Service Co., LTD.

NAKATA ENGINE,CO.LTD
NARASAKI SANGYO CO.,LTD.
Nichimoly Division, DAIZO CORPORATION
Niigata Transys Co., Ltd.
Nikko Electric Industry Co., Ltd.
NIKKO ELECTRIC MFG. CO., LTD.
NIPPON DONALDSON, Ltd.
NIPPON ENGINE Co., Ltd.
NIPPON METAL HOSE CO.,LTD.
NIPPON SHARYO, LTD.
Nippon Signal Co., Ltd.
NIPPONDENSO Co.,LTD.
Nishi Instrument Industry Co.,Ltd.
Nishiyama Corporation
OILES CORPORATION
OKUTANI THERMOS Co., Ltd.
ORIENTAL INSTRUMENTS Co.,Ltd.
OTSUBO-ENGINEERING Co., Ltd.
Parker Corporation, Inc.
REX INDUSTRIES CO., LTD.
SAGINOMIYA SANKI CO., LTD.
SAKAGAMI SEISAKUSHO LTD.
SANSEI RUBBER INDUSTRIES CO., LTD.
SEIKO ELECTRIC CO.,LTD.
SEKIGAHARA SEISAKUSHO LTD.
Sensbey Co., Ltd.
SIEMENS MOBILITY LIMITED

SUMIHATSU Co.,Ltd
Sumitomo Riko Co., Ltd.
Sumitomo Riko Hosetex, Ltd.
SumiRiko Corporation
Sumitomo Electric Industries, Ltd.
Sumitomo Electric Tool Net, Inc.
TAKAGI KOGYO Co., Ltd.
TENRYU INDUSTRIES CO., LTD.
THE YOKOHAMA INDUSTRIAL PRODUCTS JAPAN CO., LTD.
Timken Singapore Pte Ltd
TOGAWA RUBBER CO.,LTD.
TOKAI MATERIAL CO., LTD.
TOMIZAWA IRONWORKS Co., Ltd.
TORIUMI MANUFACTURING CO., LTD.
Toshiba Infrastructure Systems & Solutions Corporation
TOYO & ENGINEERING CORP. LTD.
US Co.,Ltd.
WATANABE Industrial Co., Ltd.
YAGYU IRONWORKS Co., Ltd.
Yamakami, Inc.
Yamazaki Corporation.
Yashima & Co., Ltd.
Yawata Electric Industrial Co., Ltd.
YUTAKA MANUFACTURING CO.,LTD.



3-10-10, Tsukiji, Chuo-ku, Tokyo, 104-8431 Japan
 TEL +81-3-3543-9705
 FAX +81-3-3543-9729
www.najico.co.jp/en/

—Corporate philosophy—

- 《 Trust 》 —To gain the trust of customers, thereby establishing the corporate foundation.
- 《 Contribute 》 —To contribute to society through business operations.
- 《 Harmony 》 —To make work worthwhile through harmony among all employees.

NAJICO mark is represented by the stable shape of equilateral-triangles, symbolizing our corporate philosophy “Trust, Contribution, Harmony”, and our action guidelines “make steadfast efforts, and commit yourself to work”.

ClassNK



ISO 9001