

A detailed technical line drawing of industrial machinery, likely a rolling mill, serves as the background. The drawing shows various components including large rollers, structural frames, and mechanical linkages, all rendered in a precise, schematic style.

NAJICO

Rolling Stock Parts and Relative Goods.



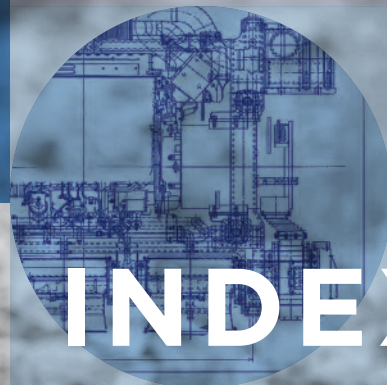
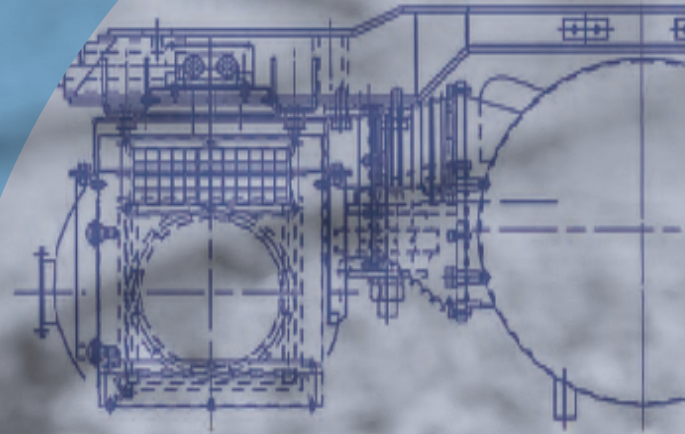
Group management vision

**Building trusted quality / Growing with customers /
Offering new value to society**

People's lives keep changing and diversity continues to expand.

Without being bound by preconceptions, Najico will develop new technologies and ideas with an eye on the future. To this end, we must consider resource and energy issues and pay attention to environmental conservation. Based on these efforts, we will provide all kinds of solutions, creating new value to contribute to a mobility society.

NAJICO



INDEX

01 Bogie Parts

02 Diesel Rolling Stock Parts

03 Passenger Compartment and Driver's Cab-related Parts

04 Body and Fitting Parts

05 Machines and Equipment

06 Global expansion

07 Company Profile & Branch Offices

01

Bogie Parts

Najico contributes to precise and powerful running of trains every day in both visible and invisible spaces.



Wearing Plates/Bush



Wearing Plates



OILES Bearings

Items Procured Overseas



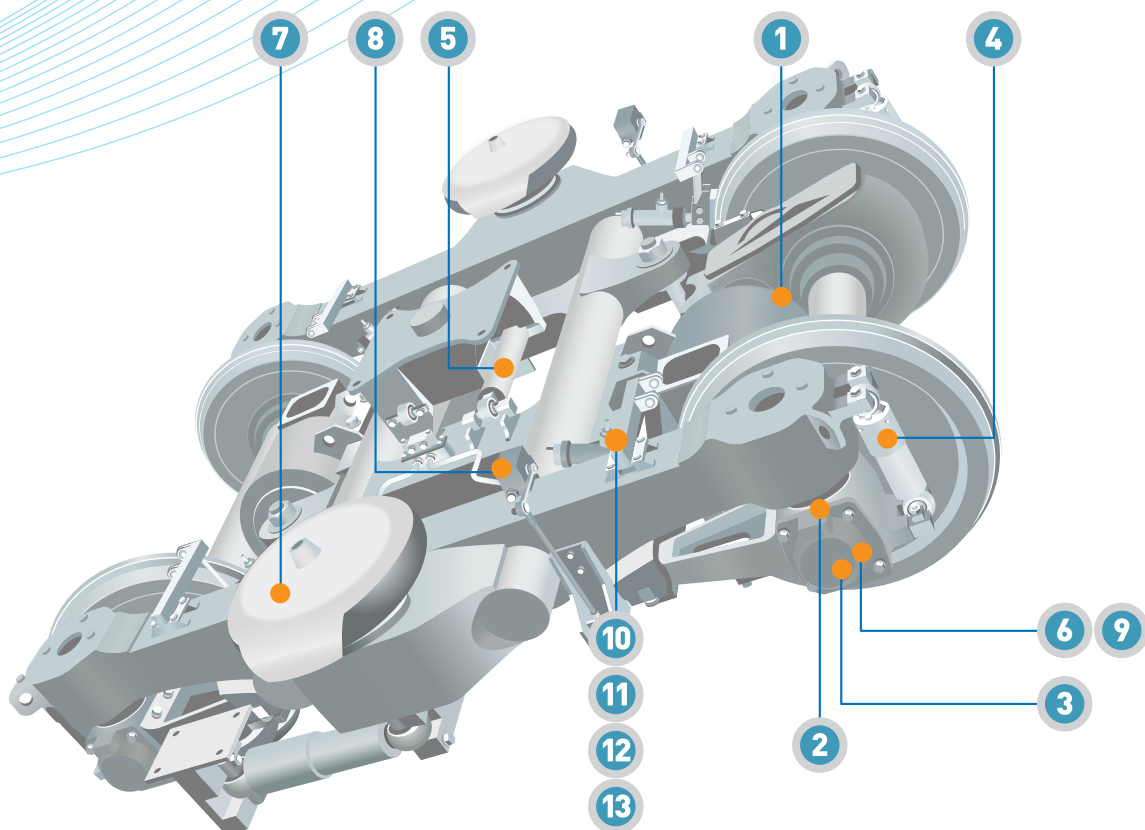
1 Motor Suspension Unit



2 Journal Bearing



3 Earthing Unit



Suspension-related Parts



4 Oil Damper/
Shock Absorber



5 Semi-active
Suspension System



6 Axle Suspension
Rubber



7 Air Spring



8 Automatic
Leveling Valve

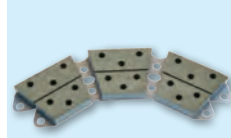


9 Rubber Bush

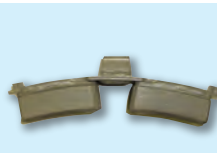
Brake-related Parts



10 Caliper Brake



11 Sintered Metal
Brake Pad,
Brake Lining



12 Brake Shoe,
Brake Block



13 Wheel Tread
Cleaning System

Najico's experience and technology, enthusiasm and dispassionate consideration support our future.



Power System/Auxiliary Equipment



1 Diesel Engine for Diesel Multiple Unit



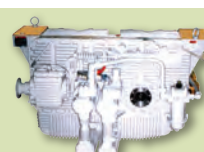
2 Diesel Engine for Diesel Locomotive



2 Hydraulic Transmission for Diesel Multiple Unit



2 Hydraulic Transmission for Diesel Locomotive



3 Constant Speed Unit for generator drive



4 Drive Shaft, Auxiliary Driving Shaft



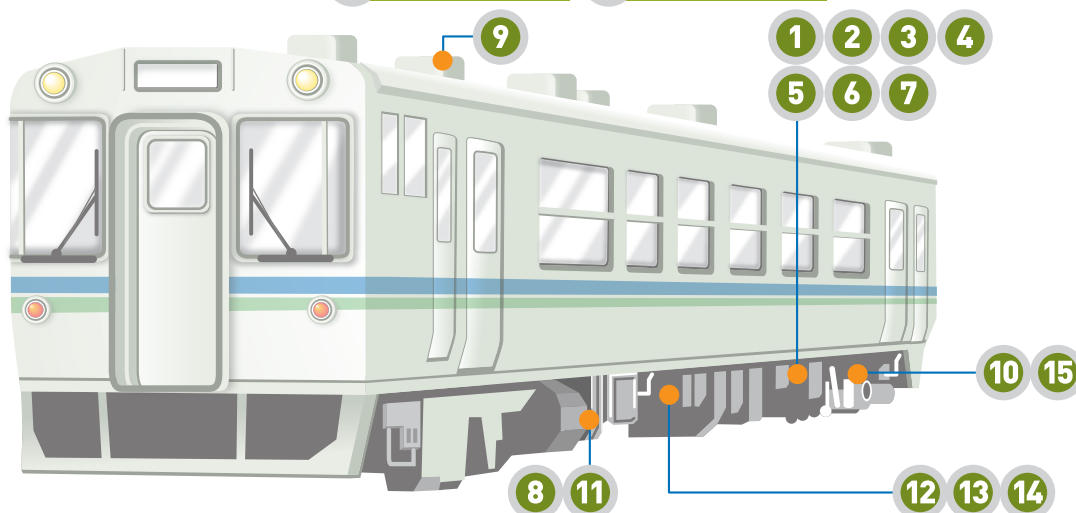
5 Auxiliary Driving Parts



6 Reduction Gear



7 Starting Motor



Cooling Equipment



8 Heat Exchanger, Radiator, Oil Cooler



9 On Roof Radiator

Electronic Equipment



10 Fuel Leak Detectors



11 Fan Control Unit for cooling system

Other Equipment



12 Fuel Tank



13 Water Tank



14 Exhaust Silencer



15 Pre heating system

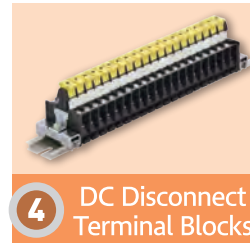
03

Passenger Compartment and Driver's Cab-related Parts

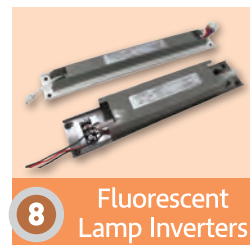
Najico has paid the closest attention to every detail of facilities' comfort and safety.



Driver Cab Equipment



Broadcast Unit

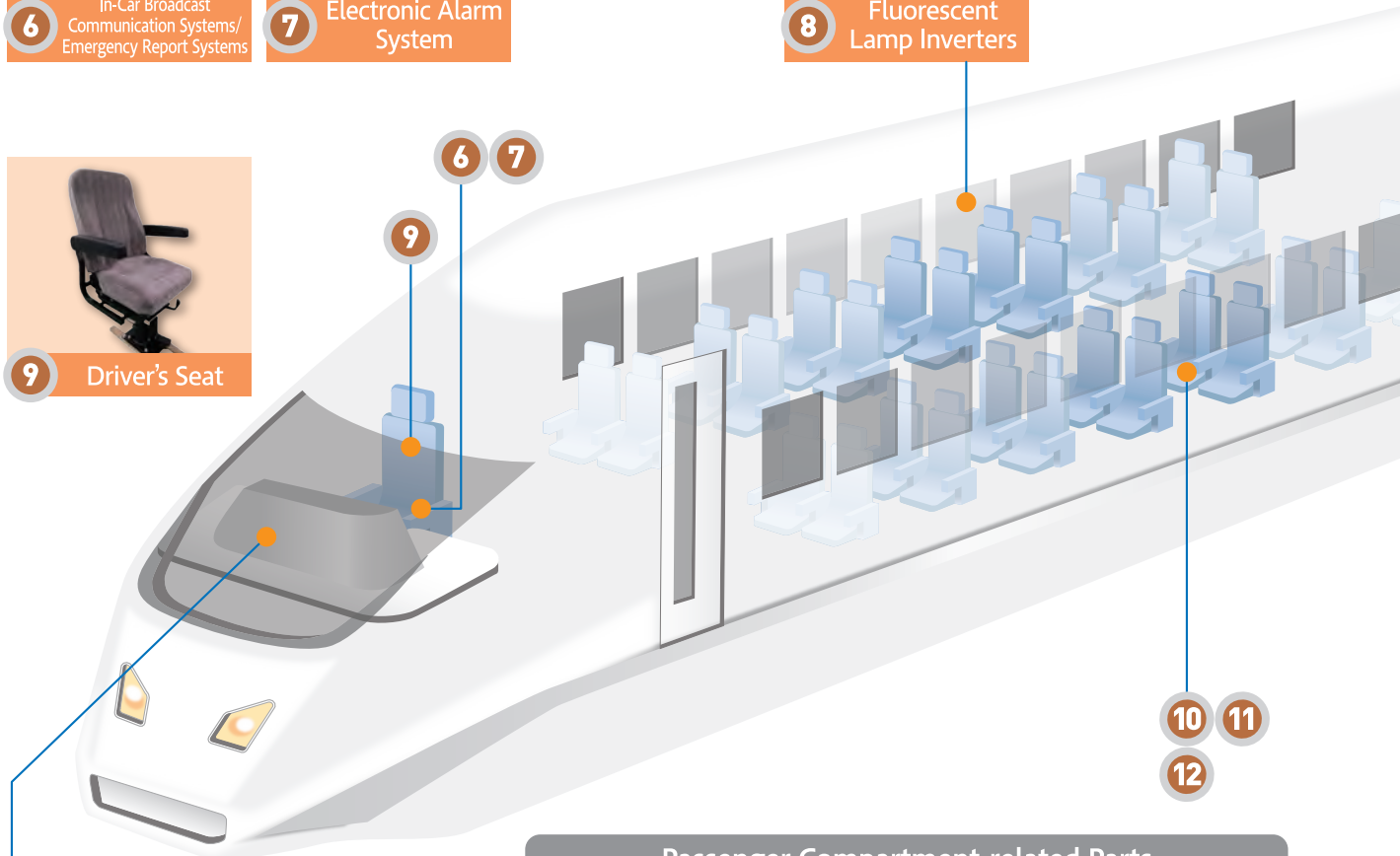


6 In-Car Broadcast Communication Systems/ Emergency Report Systems

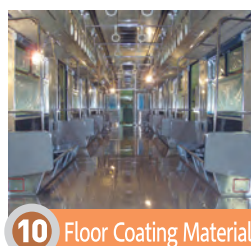
7 Electronic Alarm System

8 Fluorescent Lamp Inverters

9 Driver's Seat



Passenger Compartment-related Parts



10 Floor Coating Material

11 Electric Heaters

12 Passenger's Seat

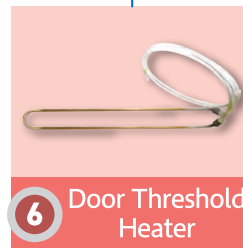
04

Body and Fitting Parts

Rolling stock technology proposed by Najico supports comfortable spaces in trains traveling at high speeds.



On Roof Fitting Parts



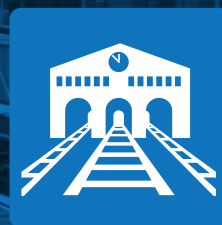
Underfloor Fitting Parts



05

Machines and Equipment

Najico provides rolling stock-related products and testing equipment to support customers in various ways.



Inspection and Repair Facility/Equipment



1 Damper Test System

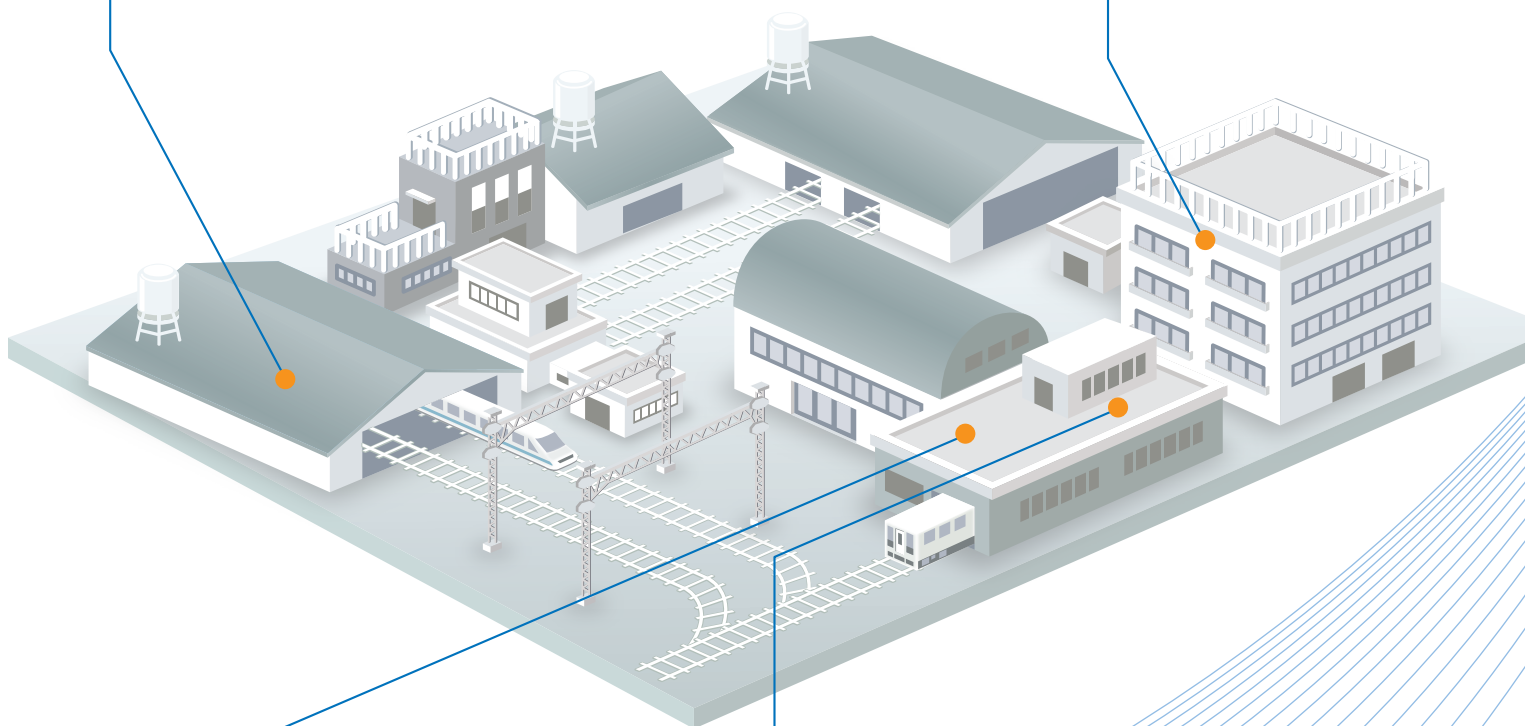
Disaster Prevention Facility/Equipment



2 Emergency Power Generator



3 Najico Evacuators



Energy Saving Equipment

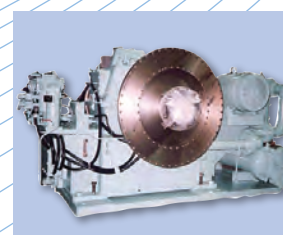


4 Silvent Air Nozzles

Power Transmission Equipment



5 Fixed-charge Hydraulic Coupling



6 Omega Clutch

06

Global Expansion



NAJICO has been focusing on exporting rolling stock parts for a long time and has supplied various parts to railway operators and car builders based in East to Southeast Asian regions. In recent years, our overseas transactions have expanded dealing with products that are not limited to rolling stock parts, but also track parts including synthetic sleepers and facility equipments.

South Korea



We supply hydraulic transmissions to car builders that mainly produce maintenance locomotives. We have been patronizing high-quality Japanese products for many years.

Taiwan



Najico brand cooling systems and drive shafts have been adopted in many diesel trains and locomotives that are active in Taiwan.



Myanmar



Since 2019, we have delivered over 9,000 synthetic sleepers to Myanmar Railways. We also provided on-site guidance on processing and laying together with the manufacturer, contributing to the improvement of bridge safety.

China

Chinese rolling stock manufacturers are developing various rolling stock products equipped with cutting-edge technology. We are contributing to the development of rolling stock by improving the ride comfort of next-generation high-speed rolling stock and proposing various systems.

Thailand



State Railway of Thailand has adopted numerous Japanese-made diesel railcars, and we supply parts for them. We are committed to supplying parts for vehicles transferred from Japan.

Brazil



We supply transmission parts for in-house locomotives of steelworks. Railways are active even in places that many people do not see, and we also support such railways.



Please feel free to contact us for any inquiries concerning import or export of products: interest of Japanese railway market, interest of overseas products, need of import/export support, etc.

SIEMENS

Gerken Group
A Wabtec company

TIMKEN



Company Profile

●Head Office

6-19-20, Tsukiji, Chuo-ku, Tokyo
104-0045 Japan

●Founded: July 18, 1929

●Incorporated: June 14, 1947

●President: Hiroki Nakamura

●Paid-in Capital: 315 million yen

●Main Business Lineup

【Industrial Machinery Division】

Design and Sales of Universal Joint
and Heat Exchanger

【Mobility Solution Division】

Design and Sales of Rolling Stock Parts
Sales of Machines and Equipments

Contact

●Overseas Sales Section

6-19-20, Tsukiji, Chuo-ku, Tokyo
104-0045 Japan

TEL +81-3-3543-9766

FAX +81-3-3543-9779

●Beijing Representative Office

2910B, Jingguang zhongxin,
Hujialou, Chaoyang district, Beijing,
100020 China

Tel. +86-10-6597-3700

Fax. +86-10-6597-3873



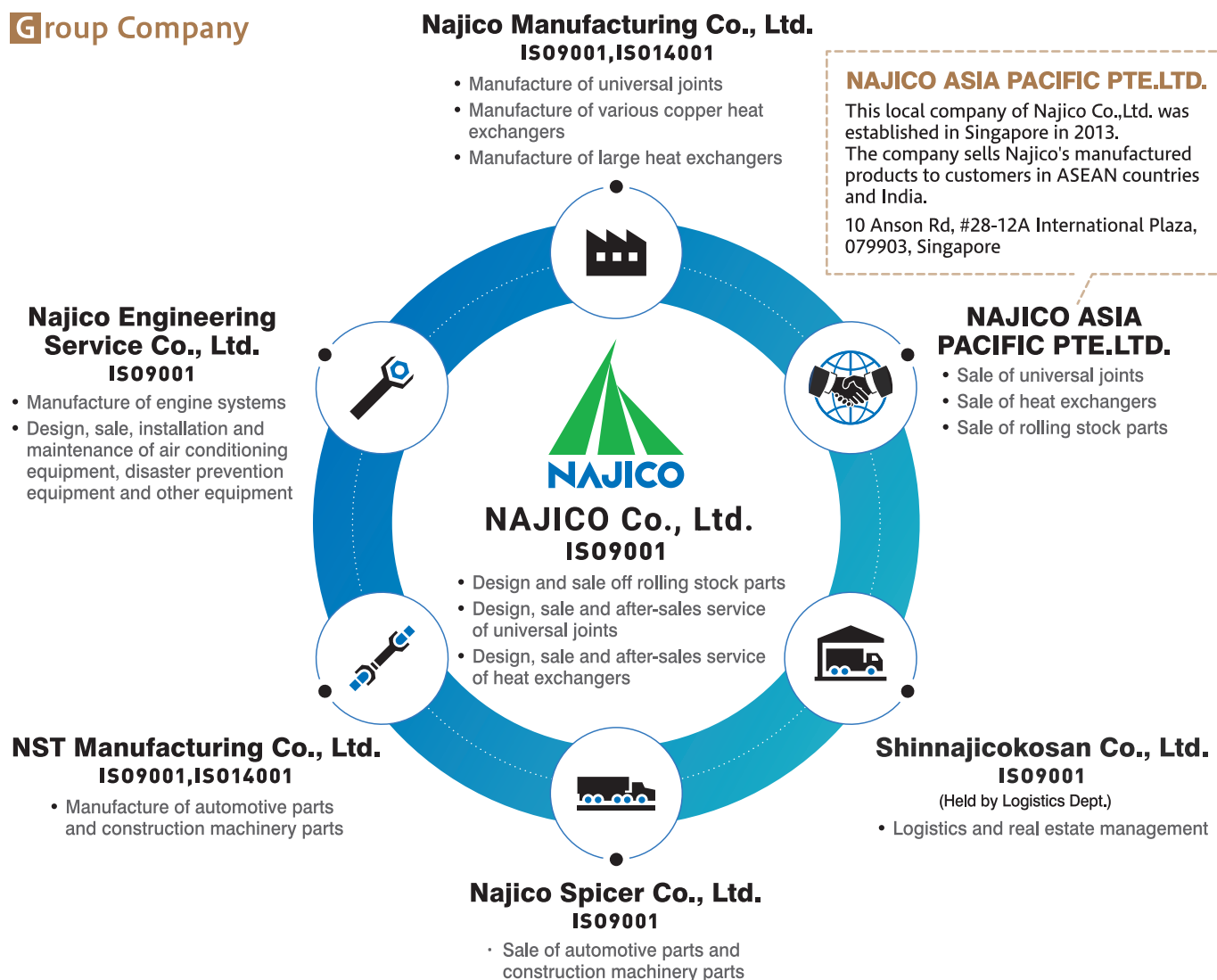
Branch Office

- Sapporo Sales Branch
- Sendai Sales Branch
- Niigata Sales Branch
- Tokyo Sales Branch
- Nagoya Sales Branch
- Osaka Sales Branch

- Yonago Sales Branch
- Okayama Sales Branch
- Hiroshima Sales Branch
- Shikoku Sales Branch
- Fukuoka Sales Branch

Najico's sales network is widely spread and bring us the next generation.

Group Company



Najico Moriya Satellite Station

We have a logistics station in Ibaraki Prefecture. We stock a wide variety of parts in the station and deliver items in a timely manner according to the customers' rolling stock maintenance plan. Of course, we handle a wide range of items that our customers need.

